

**vosges**®™





**super catalyzer<sup>®</sup>**

# **vosges**

**Principal site :  
TORRI DI QUARTESOLO  
(VICENZA) - ITALY**

**Filials in Suisse - United States  
Saudi Arabia**

**CATALYZERS FOR FUELS BY  
NATURAL PERMANENT  
MAGNETS**

**SUPER  
CATALYZER**

# SCIENTIFIC PRINCIPLE

## *Influence of the magnetic field on fuels*

**Hydrocarbons may be defined as group of chemical compounds composed basicly of carbon and hydrogen, bended together thanks to the sharing of valency electrons, to which it's associated a binding energy.**

# SCIENTIFIC PRINCIPLE

## *Influence of the magnetic field on fuels*

**The action of the magnetic field, which the Super Catalyzer exerts on the fuel, leads to a reduction of the binding energy among the atoms carbon-carbon and carbon-hydrogen.**

# SCIENTIFIC PRINCIPLE

## *Influence of the magnetic field on fuels*

**This reduction leads to a greater availability of the carbon and hydrogen atoms in a highly reactive and dynamic form called “radical”.**

# SCIENTIFIC PRINCIPLE

## *Influence of the magnetic field on fuels*

**With such combination, during the combustion process, intermediate compounds, named “peroxides”, are formed with the oxygen: these in turn with the unburnt elements bring more energy to the system, and, consequently an increase of the combustion and a better thermal efficiency.**



# THE THREADED TYPE



**super catalyzer**



# THE FLANGED TYPE



**super catalyzer**



# HOW IS PRESENTED FOR CAR, TRUCK AND MOTO



# THE THREADED TYPE FOR GPL AND GAS OIL



**super catalyzer**



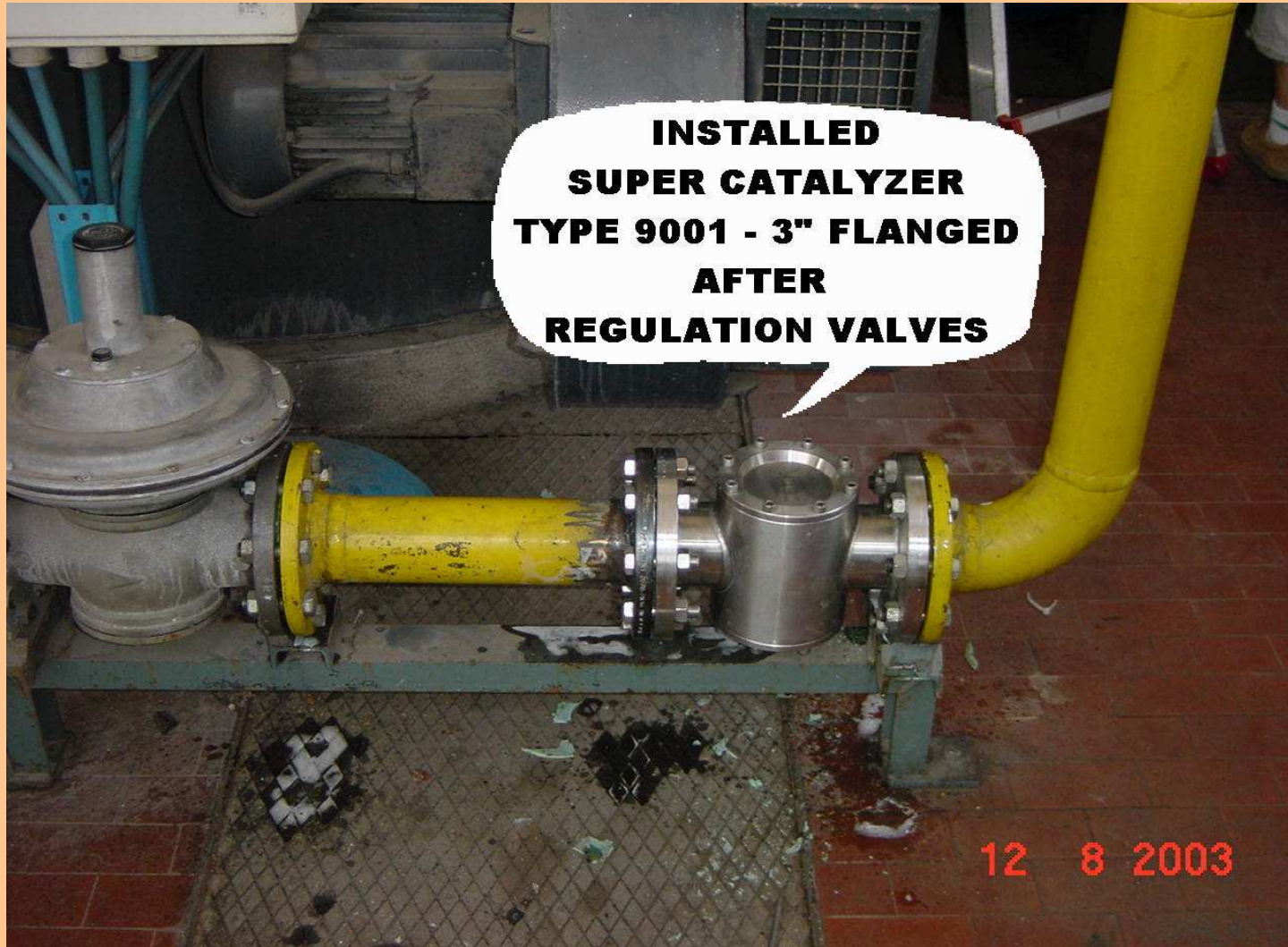
# THE BABY VERSIONS



# INSTALLATION OF THE BABY GAS TYPE ON GAS PLANT



# INSTALLATION OF THE FLANGED TYPE ON GAS PLANT

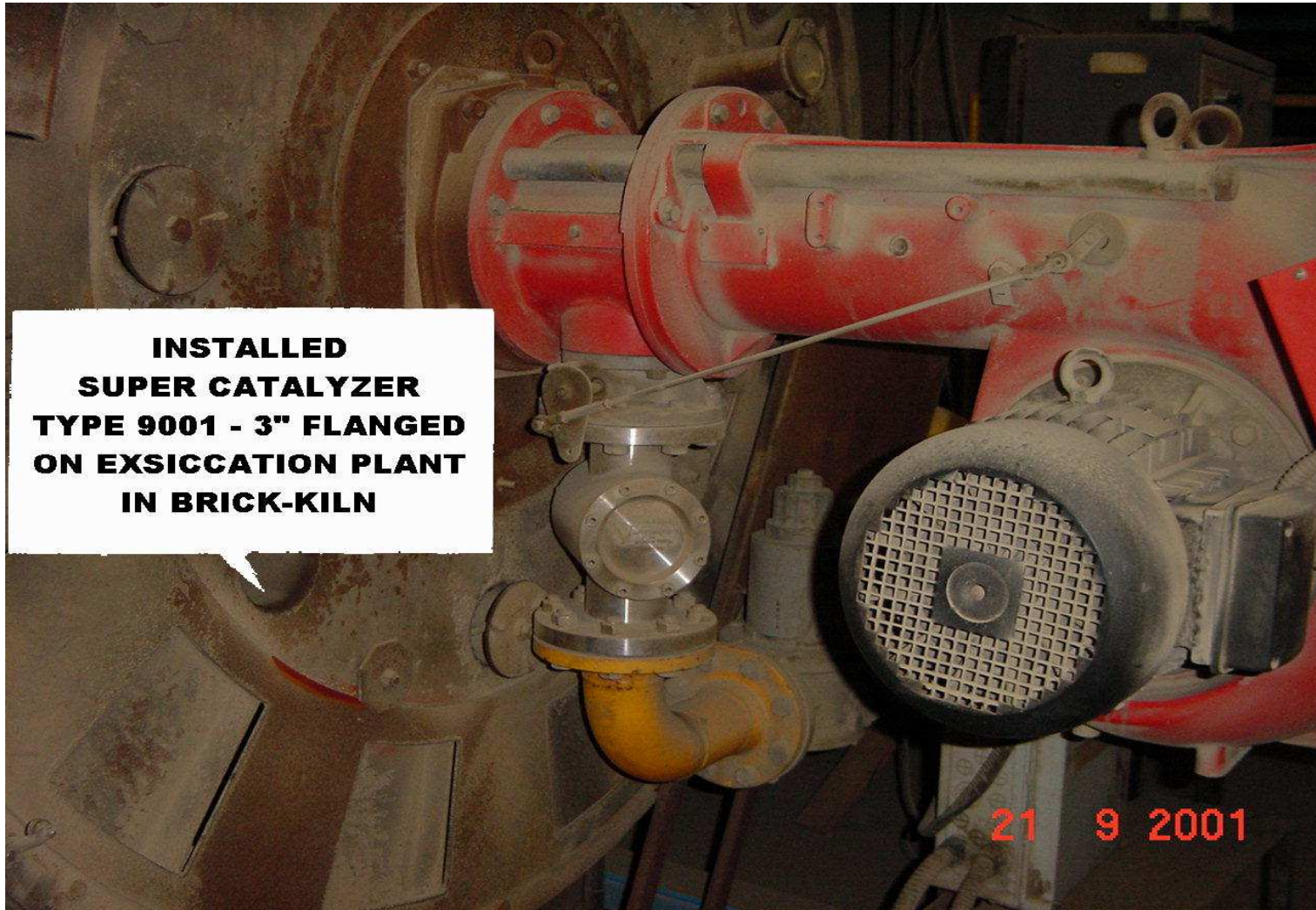


# INSTALLATION OF THE FLANGED TYPE ON GAS PLANT





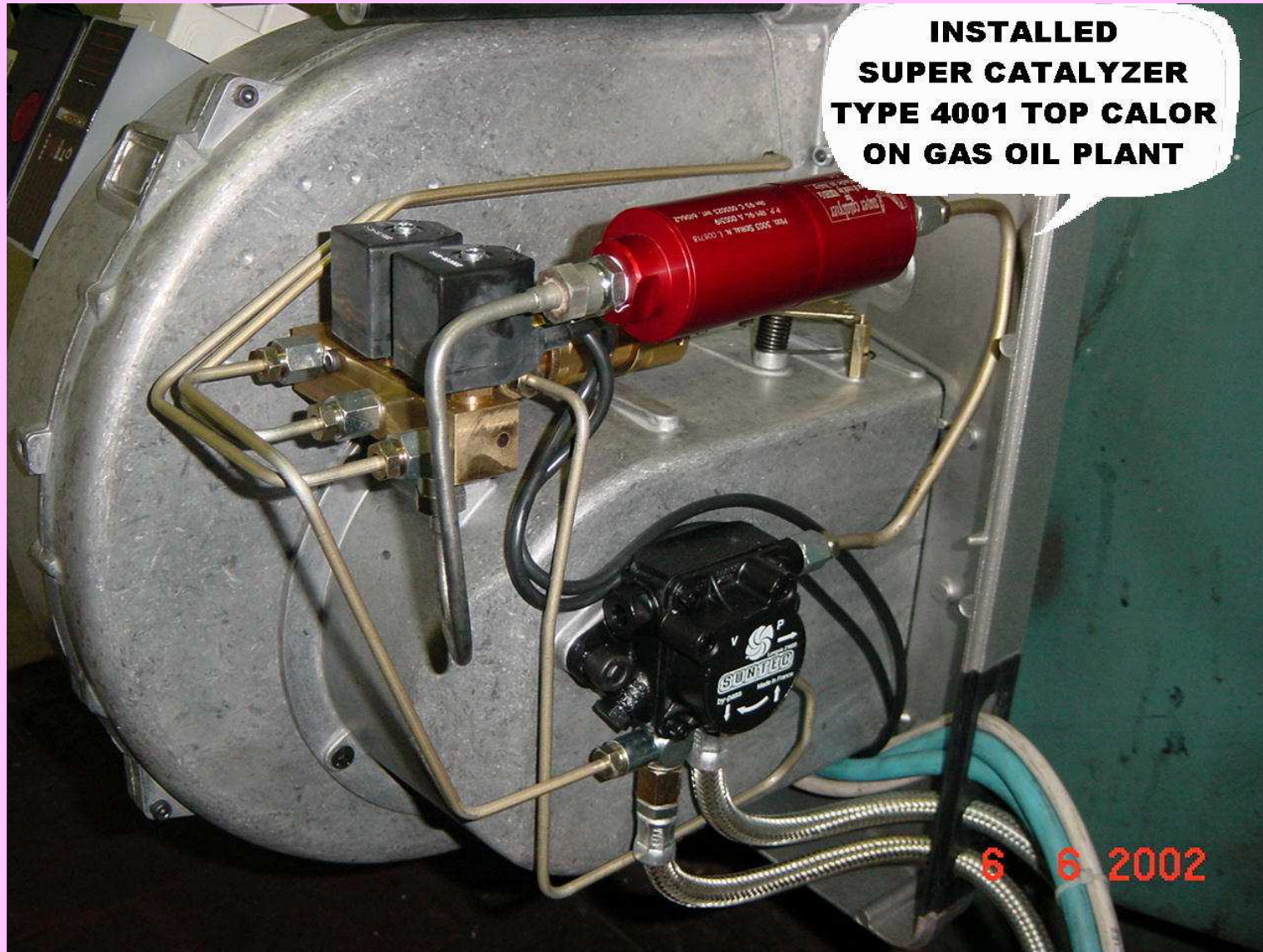
# INSTALLATION OF THE FLANGED TYPE ON GAS PLANT



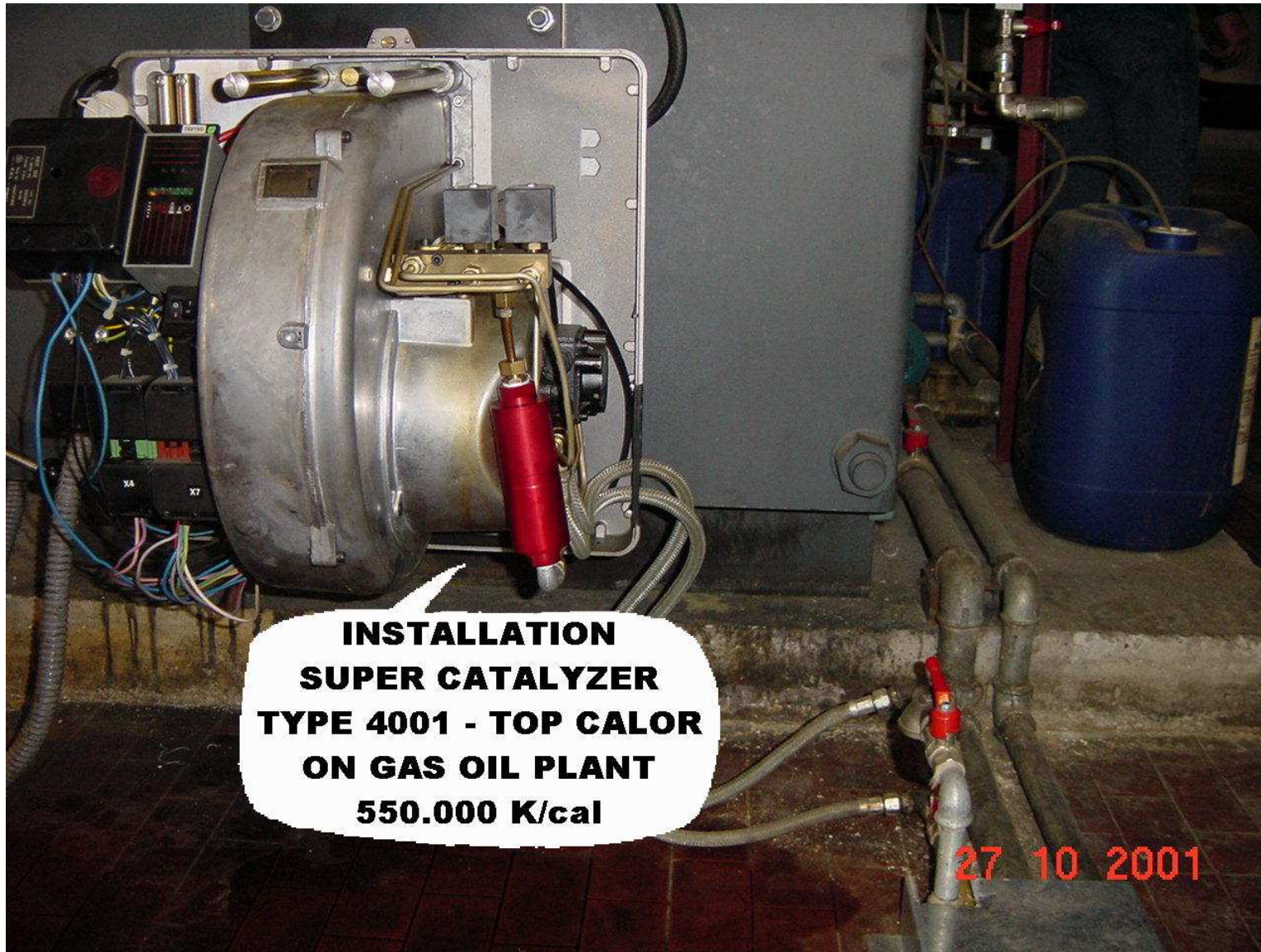
# INSTALLATION OF THE THREADED TYPE ON GAS PLANT



# INSTALLATION ON GAS OIL PLANT



# INSTALLATION ON GAS OIL PLANT



# INSTALLATION OF THE THREADED TYPE ON FUEL OIL PLANT



# INSTALLATION OF THE THREADED TYPE ON HEAVY OIL PLANT



# **INSTALLATION ON THICK OIL AND DIESEL BURNERS**

**Between the pump and  
the head of combustion.**

# **INSTALLATION ON THICK OIL AND DIESEL BURNERS**

**This system makes the magnetic field changes the fuel surface tension, and consequently it increases the flame propagation speed and its stability in the head of combustion.**



# **INSTALLATION ON THICK OIL AND DIESEL BURNERS**

**On each burner start, the better atomizing increases the combustion quality and the thermic output, reducing considerably the unburnt elements.**

# **INSTALLATION ON THICK OIL AND DIESEL BURNERS**

**In the same time the magnetic field works also as viscosity governor, enabling to have for a long time a perfect and uniform combustion in spite of the provenance and the temperature of the fuel. By consequence, we may spare on maintenance and burner regulation costs.**

# **INSTALLATION ON METHANE AND GPL BURNERS**

**After the stabilising valves,  
before the burner.**

# **INSTALLATION ON METHANE AND GPL BURNERS**

**This system makes that the action of the magnetic field on the fuels, made by chemical compounds, basicly hydrogen and carbon, leads to a reduction of the binding energy among these atoms.**

# **INSTALLATION ON METHANE AND GPL BURNERS**

**This reduction leads the fuels to a reactive and dynamic form, which react with the unburnt elements, bringing more energy to the system, and, consequently, a better efficiency of the burner. All this process leads to a high reduction of consumption of fuels.**

# **INSTALLATION ON METHANE AND GPL BURNERS**

**We will have an increase of performances, burners and boilers will remain cleaned and there will be a decrease of pollution.**

# CLIENT'S DEMANDS

**Quality of  
the product**

**Service**

**Absence of  
maintenance**

**Satisfaction of  
the client**

# SATISFACTION OF THE CLIENT

- **He has bought a very good quality product.**
- **He has a direct service by the seller.**
- **Not to think about the maintenance of the product.**



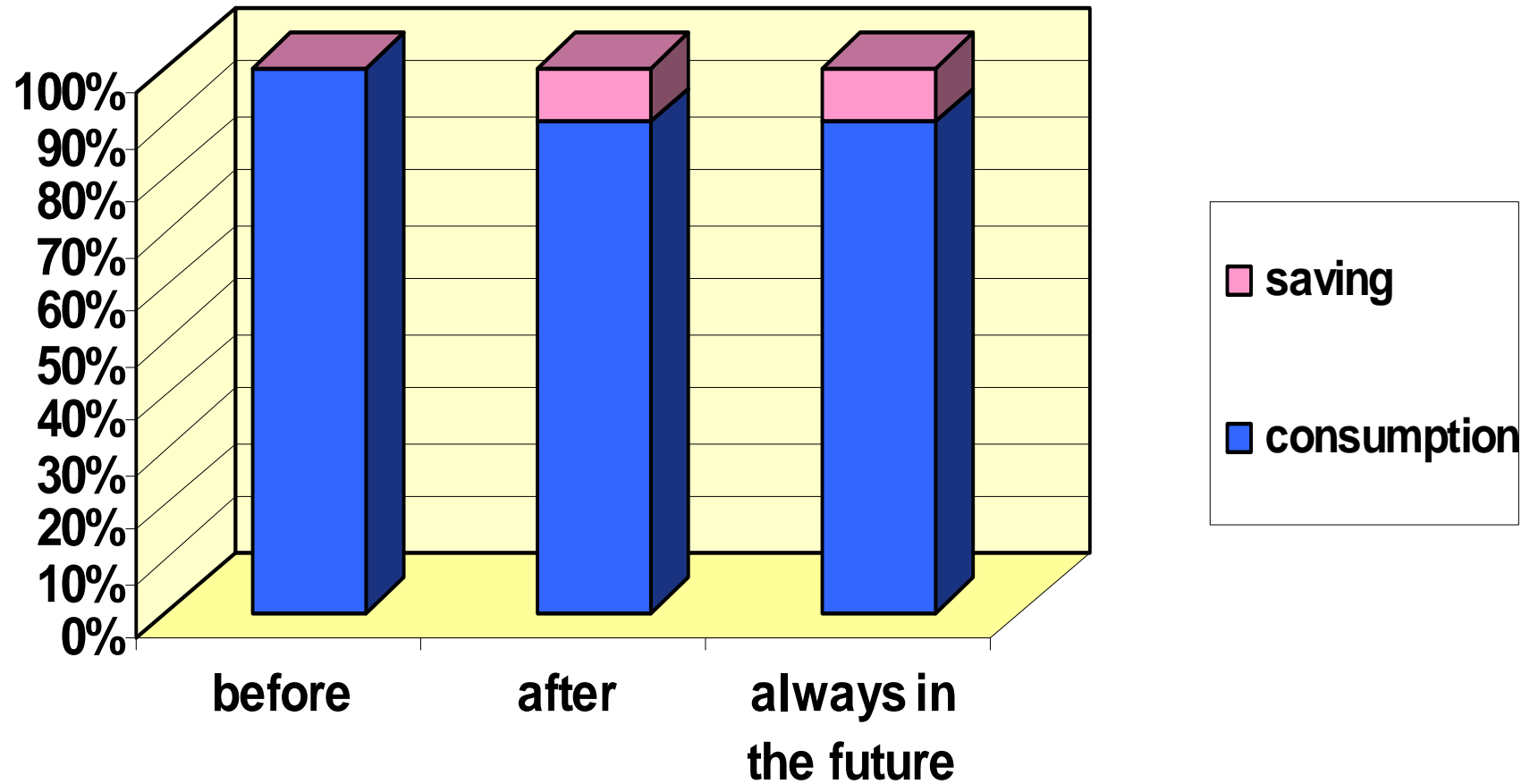


# **COSTS ANALYSIS**

**The economic advantages for the client can be resumed :**

- **Reduction of consumption up to 15% - 10% guaranteed.**
- **The amortization of the product depends on the plant and type of the fuel.**

# SAVING (in €)



# **STRONG POINTS OF THE SUPER CATALYZER**

- **No need of electrical connection.**
- **Natural permanent magnets.**
- **Product guaranteed for life.**

# ADVANTAGES

- **No other can be compared as considering reliability, efficiency and result.**
- **It's bought once in life.**
- **It's delivered directly by our deputies who will give all the instructions for the assembly and the successive utilization.**

# **THE BIGGEST ADVANTAGE IS .....**

**The idea is based upon the fact  
that the product will be used 24  
hours a day for 365 days a year  
without really perceive it.**

# REFERENCES SUPER CATALYZER

**AMAG in Padova**  
(heating system in Bassanello  
swimming-pool)

**AMCPS in Vicenza**  
(heating)

**APT in Verona**  
(autobus)

**ARSENAL M.M. in La Spezia**  
(cruiser Ardito - fuel)

**ARSENAL M.M. in La Spezia**  
(trainig-ship Amerigo Vespucci - fuel)

# **REFERENCES SUPER CATALYZER**

**ASL in Chioggia - VE**

**(heating)**

**COOPERATIVE CREDIT BANK in Padova**

**(heating)**

**DAIRY PALUMBO in L'Aquila**

**(vapor treatment)**

**TOWN HALL in Bressanone - BZ**

**(fuel)**

# **REFERENCES SUPER CATALYZER**

**TOWN HALL in S. Martino B. Albergo - VR  
(fuel)**

**TOWN HALL in Vicenza  
(autotraction)**

**FURNACES MAGNETTI in Cisano B. - BG  
(drier)**

**GREEN GARDEN SPORTING CLUB in  
Mestre - VE  
(heating)**



# REFERENCES SUPER CATALYZER

**OFWG - Austria**

**(heating)**

**HOSPITAL in Guastalla - RE**

**(heating)**

**GENERAL HOSPITAL in Mestre - VE**

**(heating)**

**ELEMENTARY SCHOOL M. PACKER in  
Bressanone - BZ**

**(heating)**

**UNIECO LATERIZI in Correggio - RE**

**(drier)**

# **REFERENCES SUPER CATALYZER**

## **CONCESSIONAIRES FOR CARS :**

**Alfa Romeo - Audi - Fiat - Ford -  
Jaguar - Lancia - Mazda -  
Mercedes - Peugeot - Seat -  
Skoda - Toyota - Volkswagen  
ecc. (cars with petrol, diesel -  
gas e methane).**

**THANKS FOR THE  
ATTENTION !**