

# VOSGES<sup>®</sup>™

**NEW** **ara**<sup>®</sup>™  
*super magnetic  
water treatment systems*



# Index

## TOPICS COVERED

Vosges - Where to find us

New Ara - What is it for?

New Ara - How it works

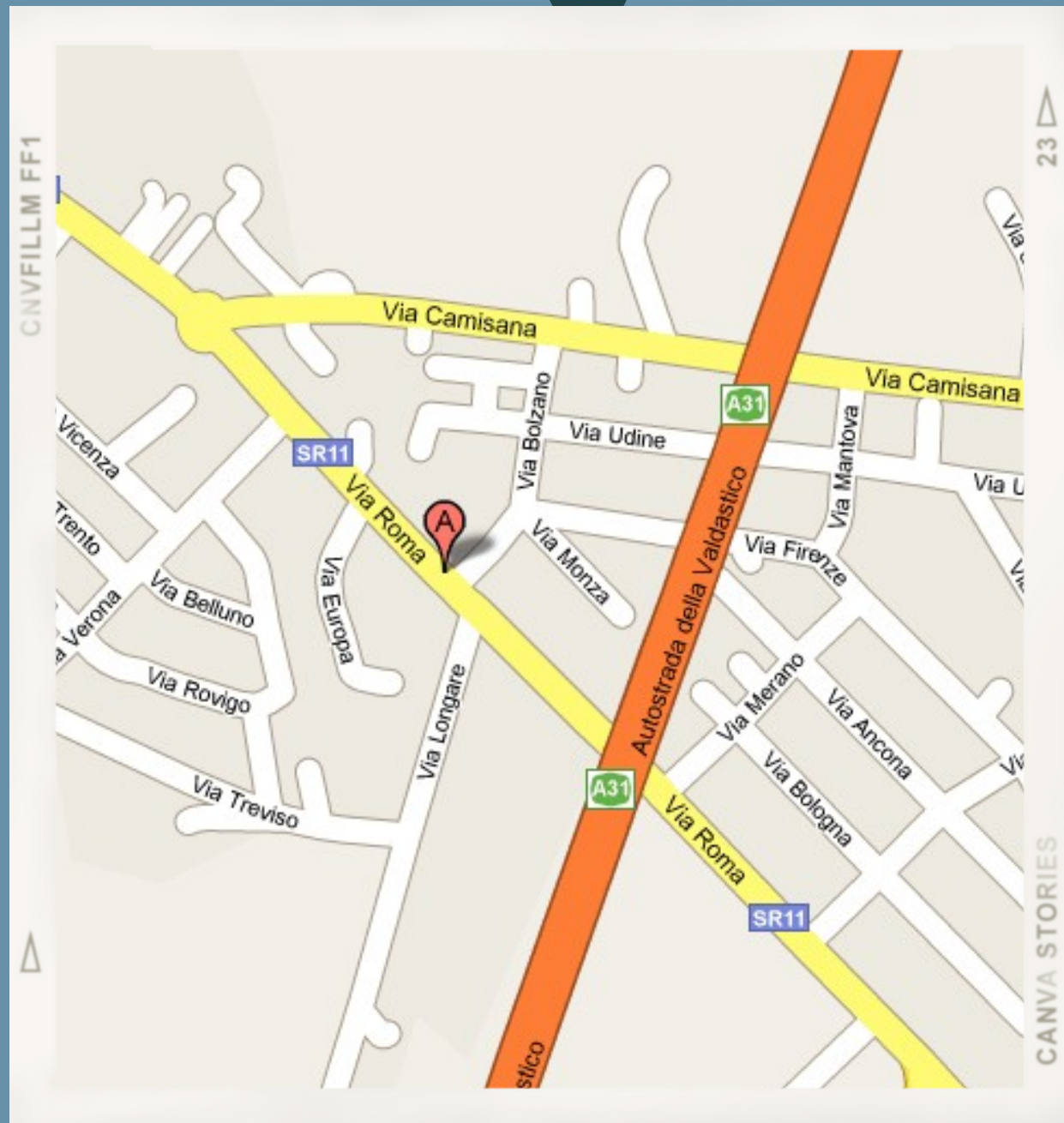
New Ara - Strongest points

New Ara - Typologies

**NEW** **ara**®™  
*super magnetic  
water treatment systems*



# Where to find us

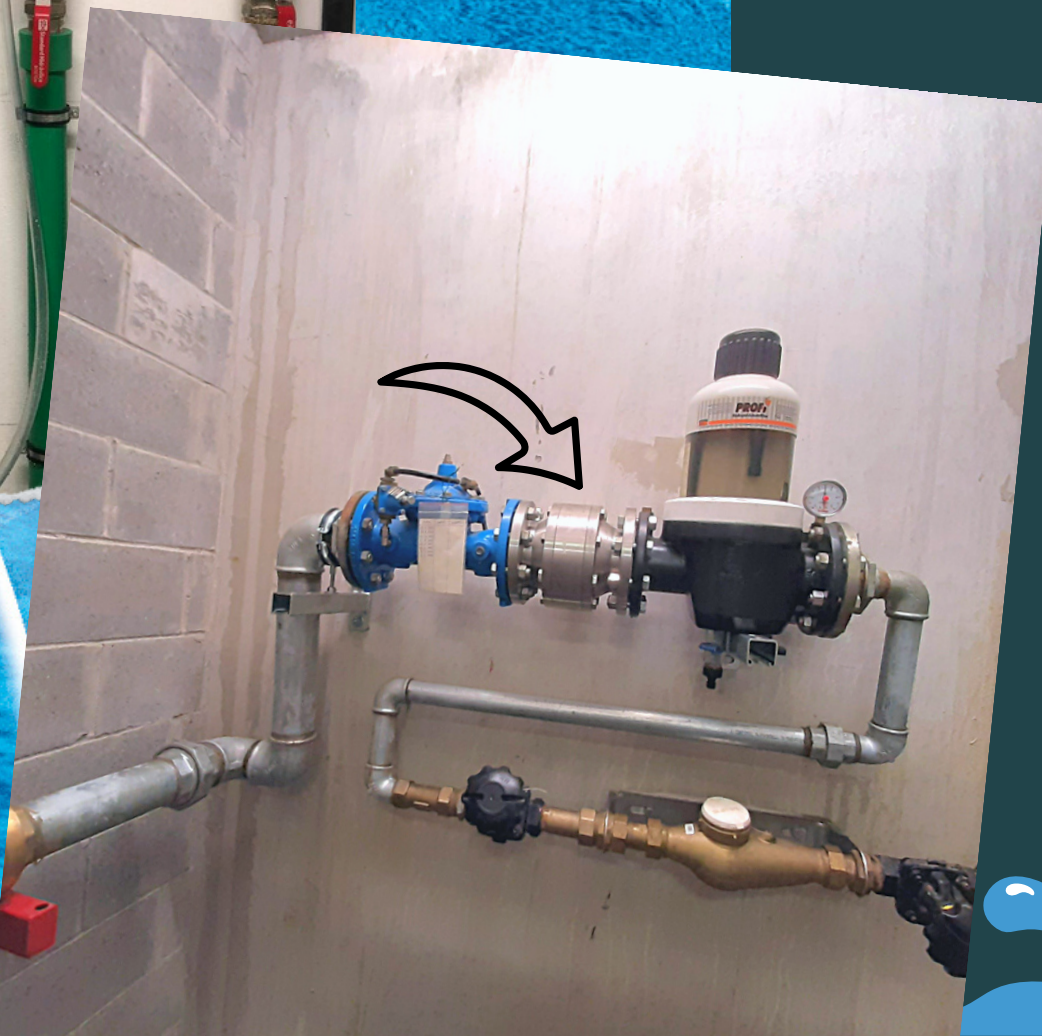


OUR HEAD OFFICE IS  
LOCATED IN TORRI DI  
QUARTESOLO -  
VICENZA

BRANCH OFFICES IN  
SWITZERLAND,  
UNITED STATES AND  
SAUDI ARABIA

# NEW ARA: what is it? - What is it for?

- NEW ARA ionic accelerators with permanent natural magnet radically solve many problems and damages caused by limescale deposits and incrustations in pipes and equipment.



- NEW ARA ionic accelerators are patented in over 150 countries worldwide and are an effective conditioner for all types of water.

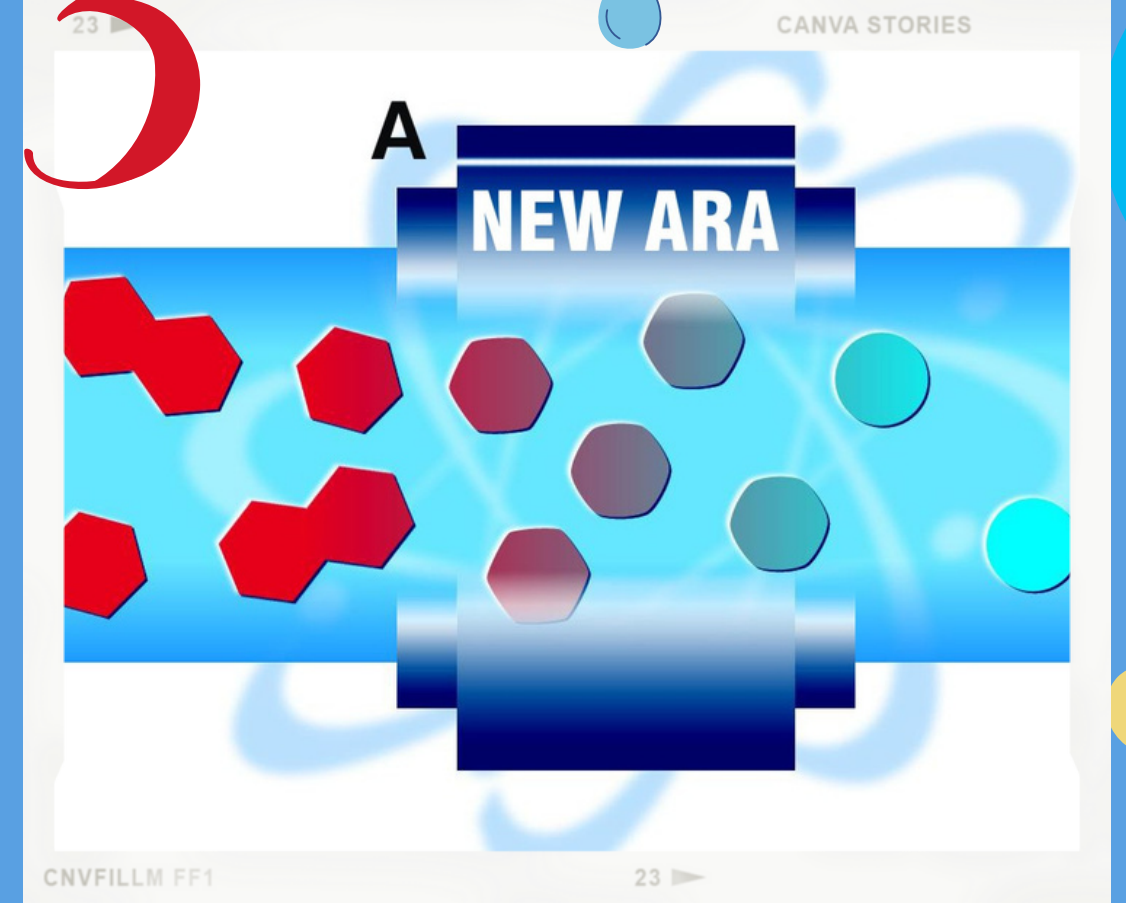
- They are ideal for homes, aquariums, waterworks, snow cannons, paper industries, laundries, pasteurisers, swimming pools, evaporative towers, coffee machines or wherever there is a need to use chemicals that are harmful to health and environment.



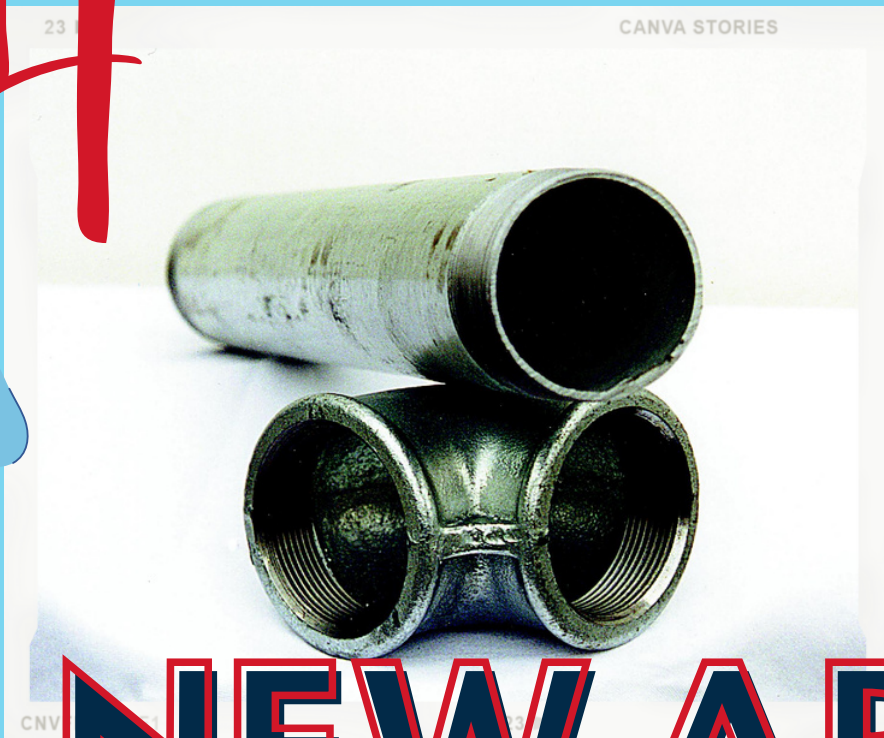
The operating principle is simple, but at the same time technologically advanced.



It is based on the forced passage of water through an extremely strong magnetic field (10.000 Gauss).



In this way, calcium turns into a soft, powdery precipitate (called ARAGONITE) instead of settling and solidifying in the pipes.



ARAGONITE, being similar to talc, remains in suspension and does not cause limescale deposits.

# NEW ARA: how it works



# NEW ARA: strongest points

No other system is comparable in terms of reliability, efficiency and results.

Our product is guaranteed for life.

You'll use it 24 hours a day and 365 days a year without even noticing it.



NEW ARAS' magnetic field's power does not decay over time because it is produced by PERMANENT NATURAL MAGNETS, not by electrical connections.

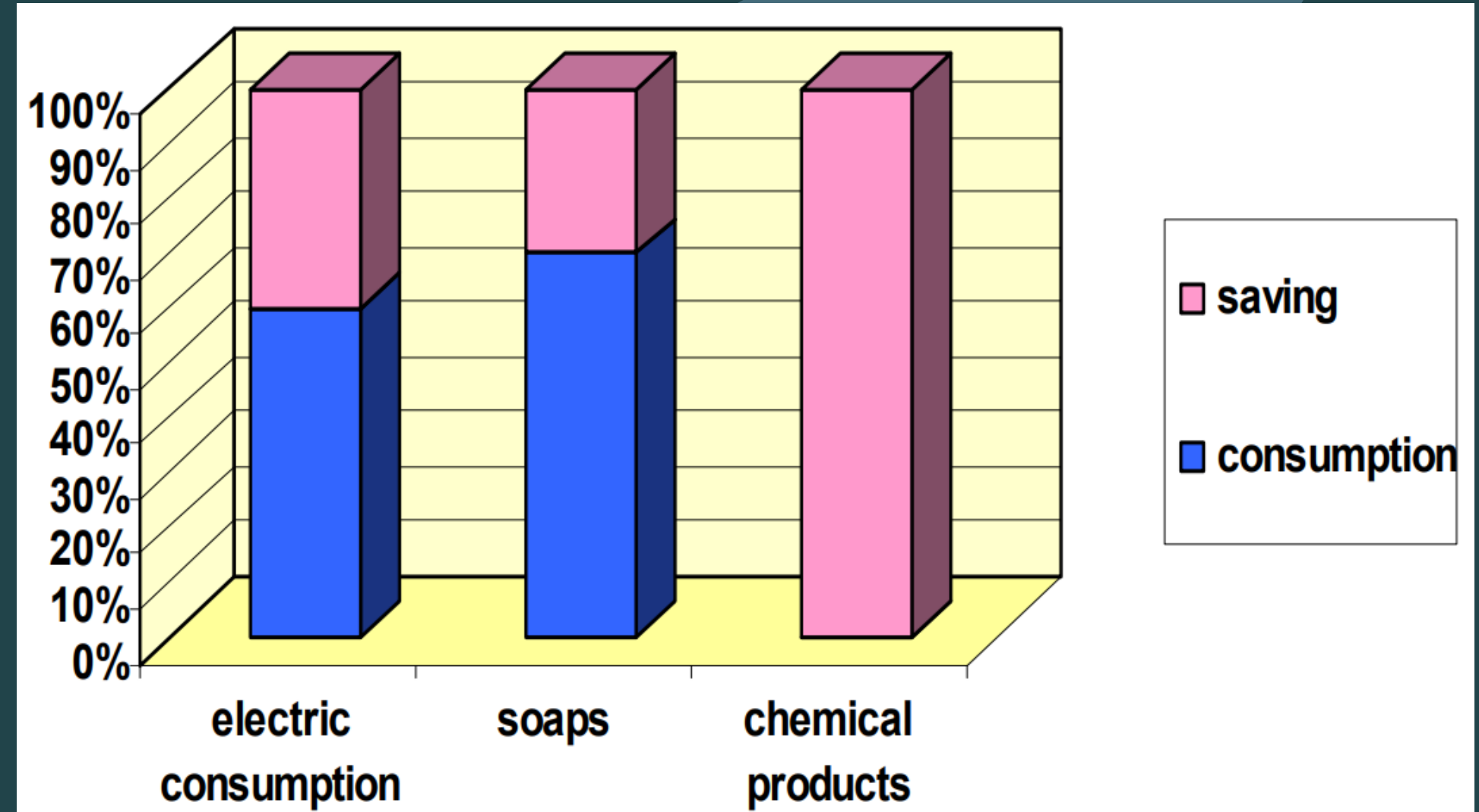
Thanks to NEW ARA, existing limescale deposits progressively dissolve.

Once installed, NEW ARA does not entail operating nor maintenance costs due to its particular solidity and resistance.

# Costs analysis for the customer

The economic advantages for the customer can be summarised as follows:

- no need to use chemicals for water softening;
- reduction of soaps and derivatives (up to 50%);
- no electricity costs.



# NEW ARA: typologies



Threaded - up to 2"



Flanged - 2" to 28"

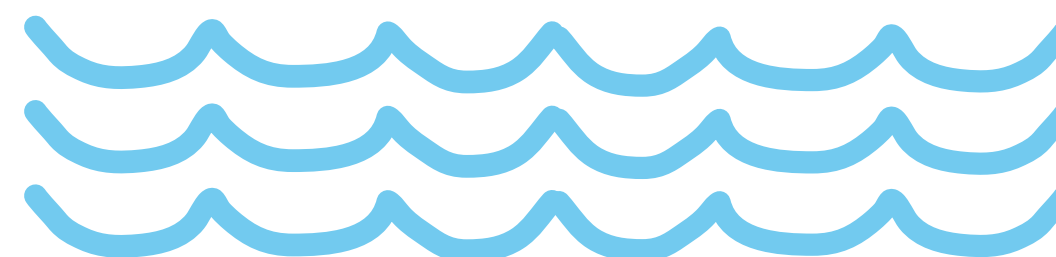
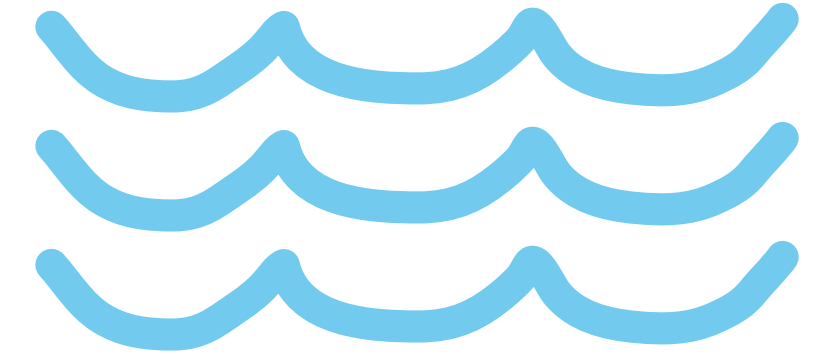


Hot water - up to 2"

**NEW ARA ionic accelerators for cold water are available in the following sizes: from 1/2" to 28". NEW ARA for hot water are available in the following sizes: from 1/2" to 2".**

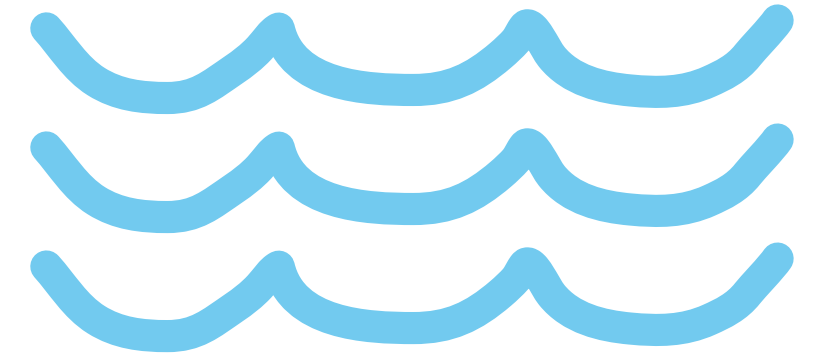


# Some pictures of entry montages



NEW ARA must be installed between a filter and a no-return valve.

# Some pictures of entry montages



The filter which must be installed before the NEW ARA must have an internal sock of 60 to 50 microns.

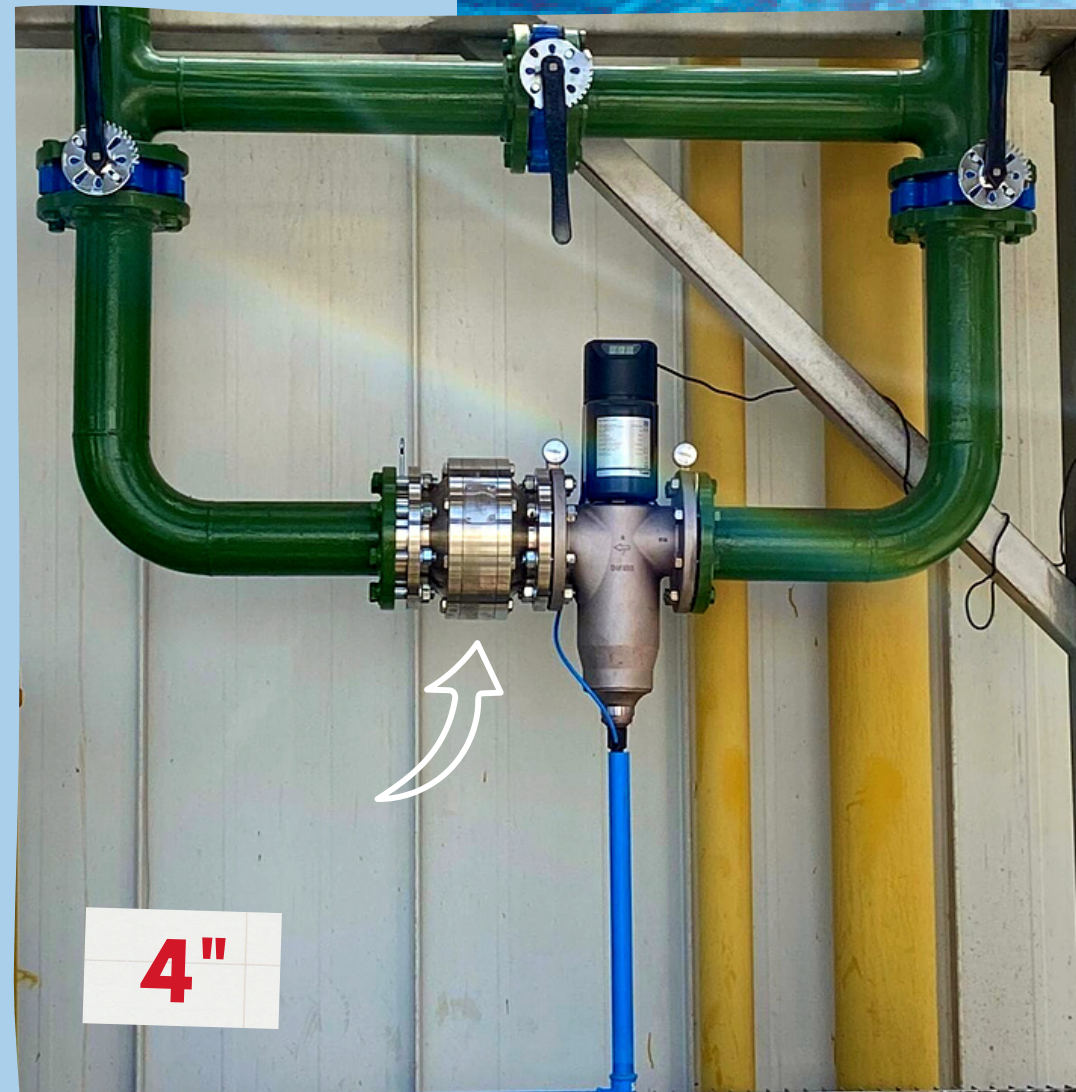
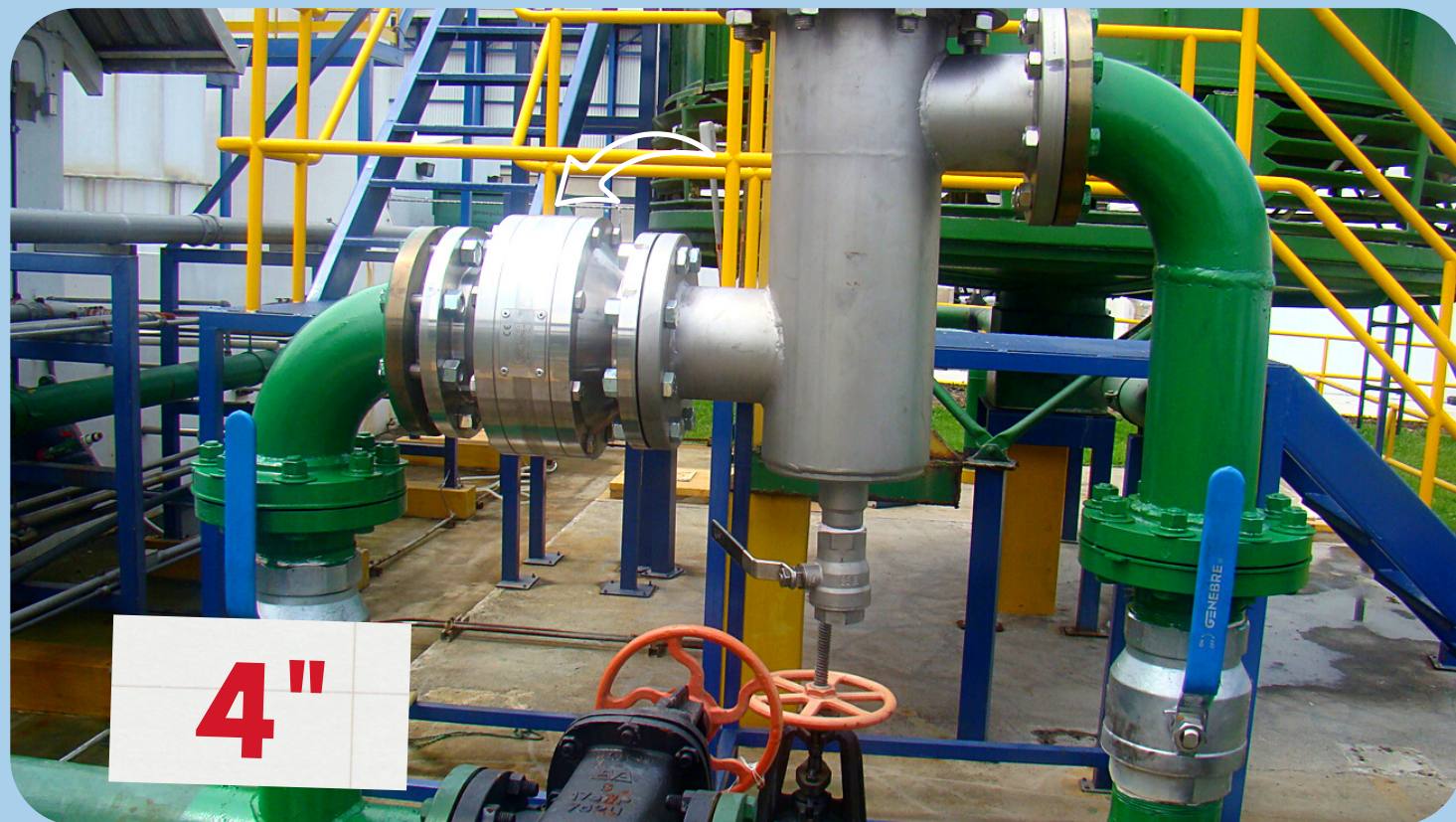


# Picture of a bypass montage



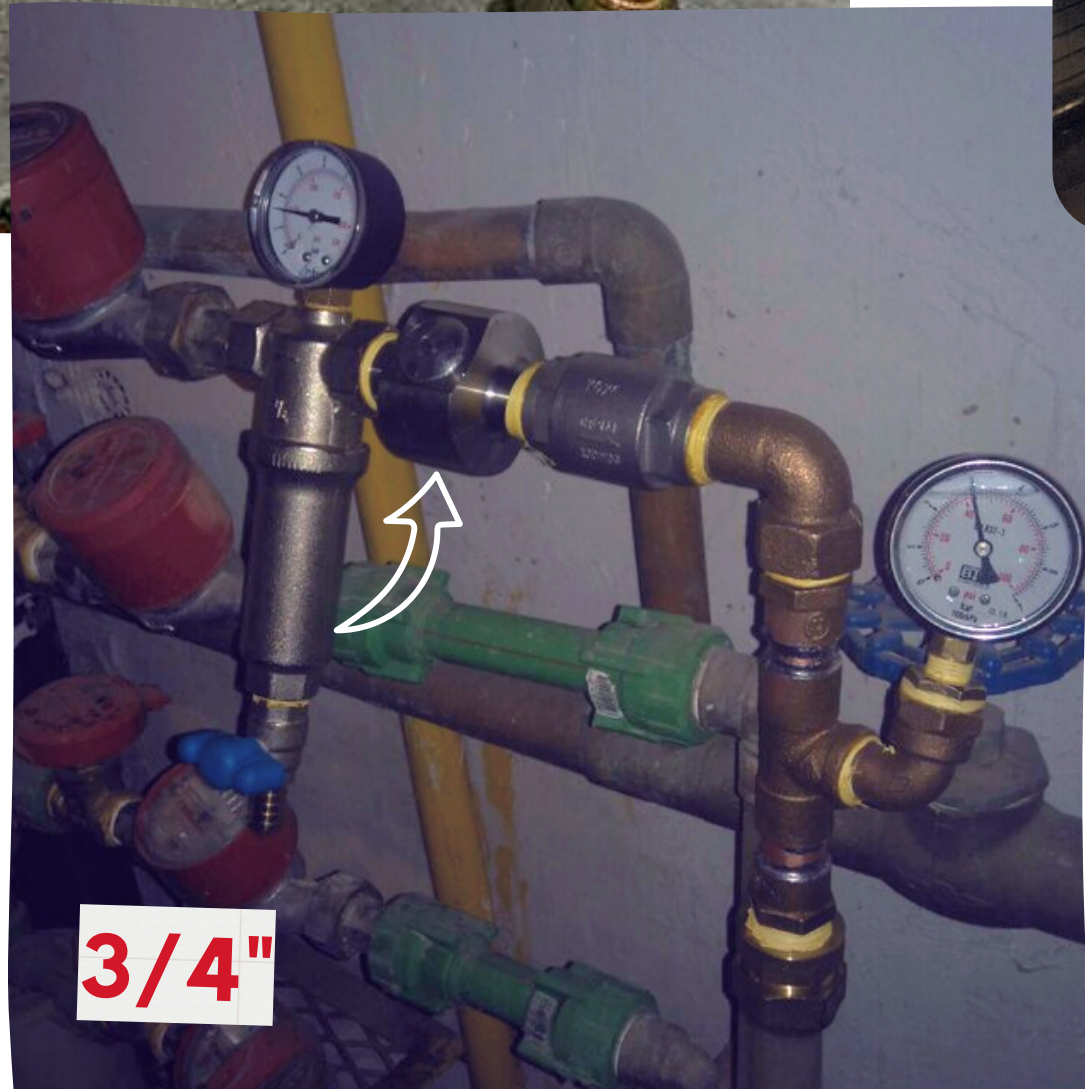
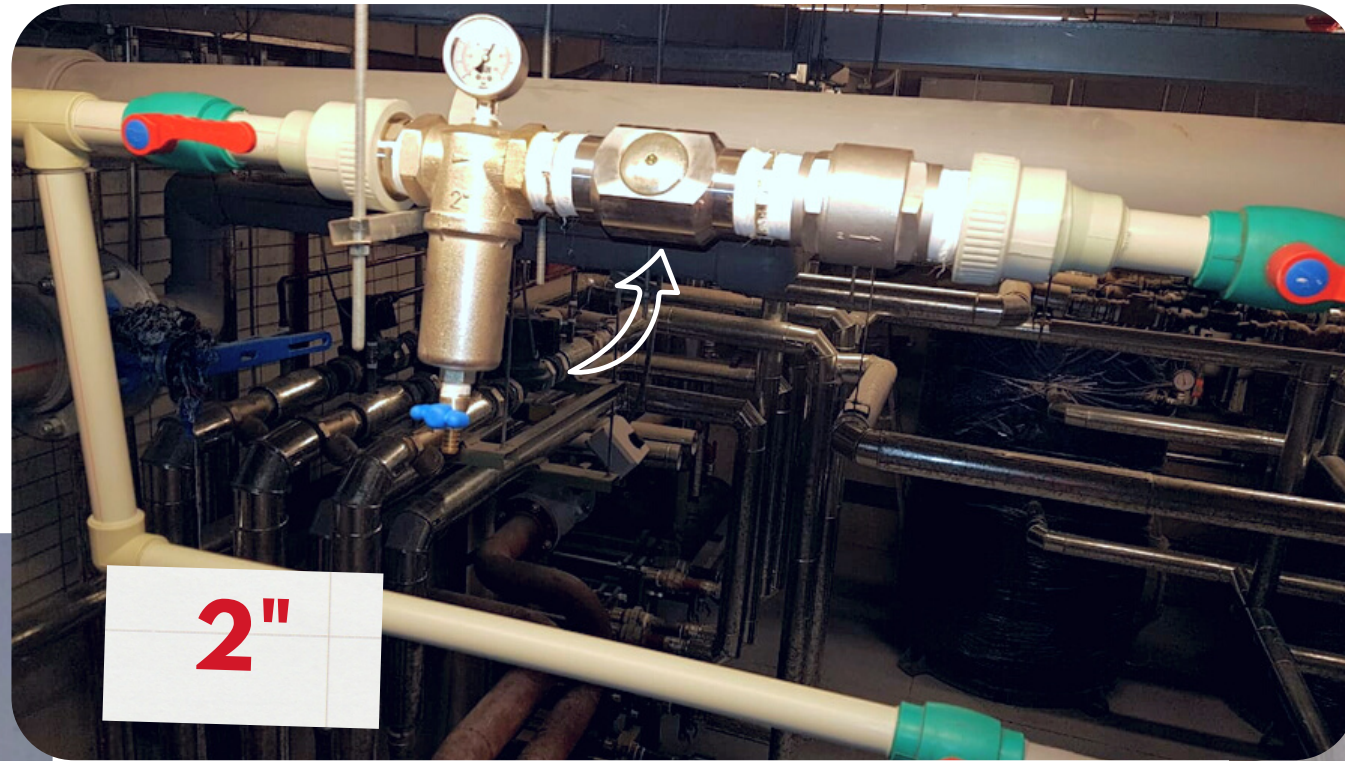
3/4"

# Entry montages - Flanged New Aras



Flanged New Ara:  
installations on cold water  
general entry.

# Montages on recirculation plants

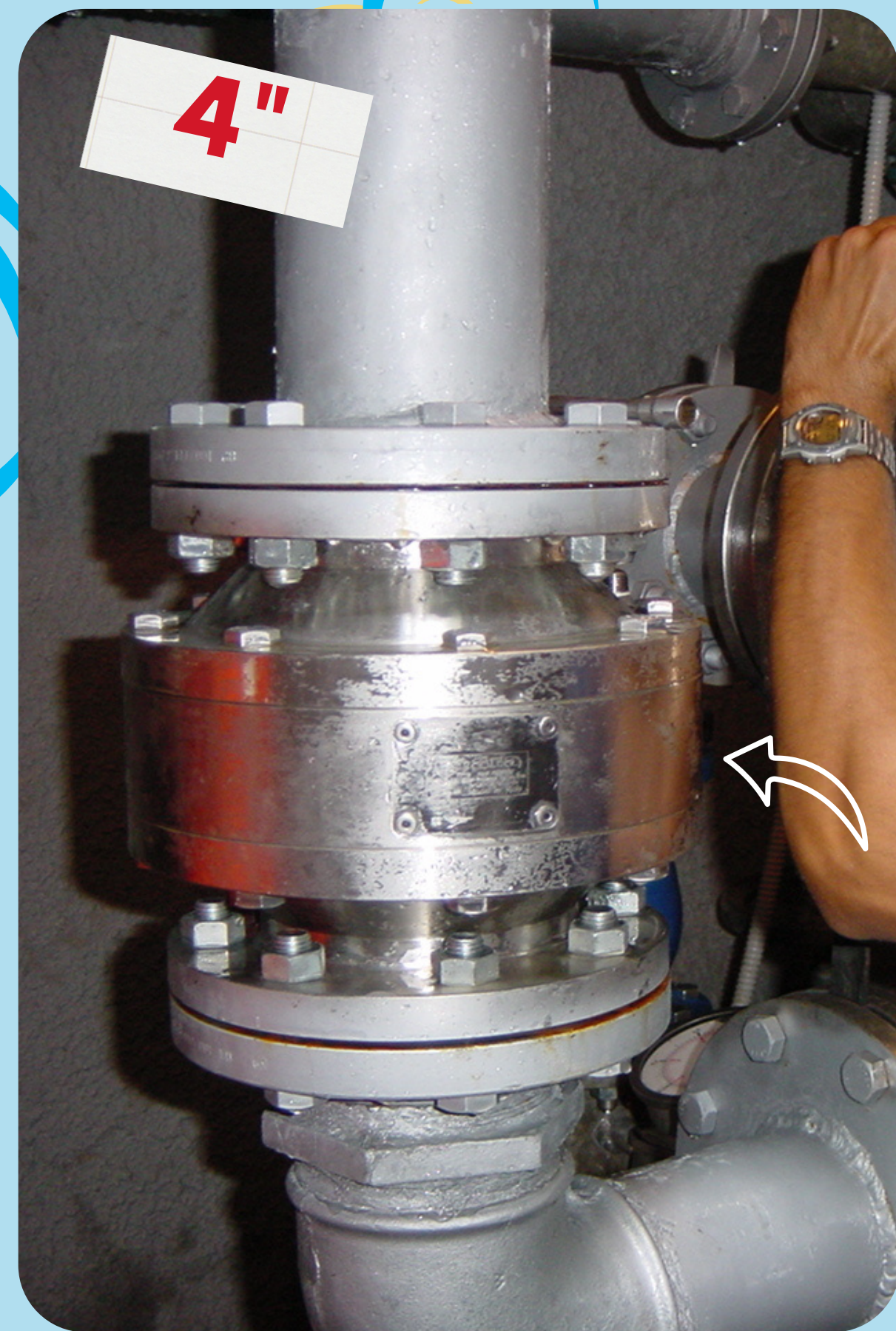


NEW ARA *Hot Water* on ricirculation plants.



# Montages on fountains

Flanged NEW ARA 4" (750 l/min) on the fountain in Piazzale Kennedy in Rimini.



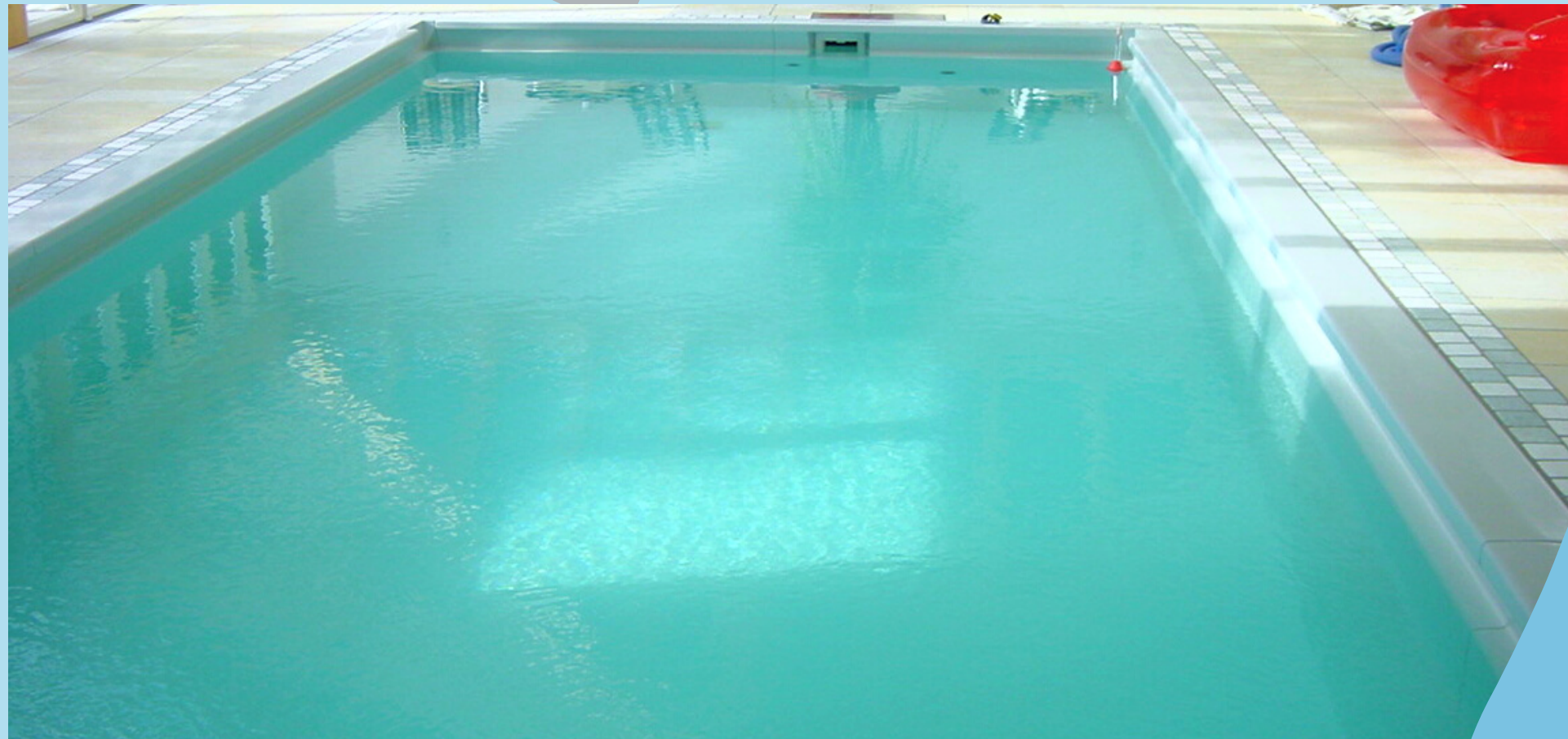
# Montages on fountains



Threaded NEW ARA 2" installed on the fountain in front of Bressanone's train station.



# Montages on swimming pools



Swimming pool in Bressanone:  
NEW ARA 1"1/2.

Plant of the swimming pool:  
the NEW ARA is after the  
pomp and before the filter.





# References



AEREOPORTI DI ROMA FIUMICINO>hot water circuit

AG. IMM. RIGONI DI VICENZA>water of a condominium

AGIP DI ROMA>cooling circuit

AMAG DI PADOVA>Bassanello's swimming pool's heating system

ARSENALE M.M DI LA SPEZIA>canteen's water, water in cruiser Ardito, water in training-ship A. Vespucci

ASPIV DI VENEZIA>water of fountains

CASEIFICIO PALUMBO DI L'AQUILA>water and vapor treatment

CASEIFICIO POMELLA DI FROSINONE>water and vapor treatment

CEMENTERIA AUGUSTA DI SIRACUSA>water for cooling compressors



# References **NEW** **ara**<sup>®</sup><sup>TM</sup>

*super magnetic  
water treatment systems*



CINECITTÁ DI ROMA > treatment of sanitary water

COMUNE DI BRESSANONE (BZ) > water treatment

COMUNE DI LUSIA (RO) > water of fountains

COMUNE DI SOMMACAMPAGNA (VR) > treatment of sanitary water

DAGNINI DI BOLOGNA > vapor treatment

DALMINE DI LIVORNO > rinse tanks

FININVEST (CENTRO DIREZ. MILANO 2) > treatment of sanitary water

GREEN GARDEN SPORTING CLUB DI MESTRE (VE) > treatment of sanitary water

ILVA DI GENOVA > refrigerated H<sub>2</sub>SO<sub>4</sub> regeneration plant

# References



LA TRIVENETA DI BRENDOLA (VI)>cooling water treatment

OREAL DI TORINO>plant of raising refrigerated H2O

SAFFA DI FROSINONE>vacuum pumps

SARIS DI TRENTO>water treatment

SCUOLA ELEMENTARE M.PACKER DI BRESSANONE (BZ)>water treatment

SIPEM DI ENNA>vapor treatment (hot water)

VIDEOCOLOR DI FROSINONE>evaporation towers



# THANKS FOR THE ATTENTION!